



ESSEN GROUP



ESSEN WINDMILLS

Haven By The Shore

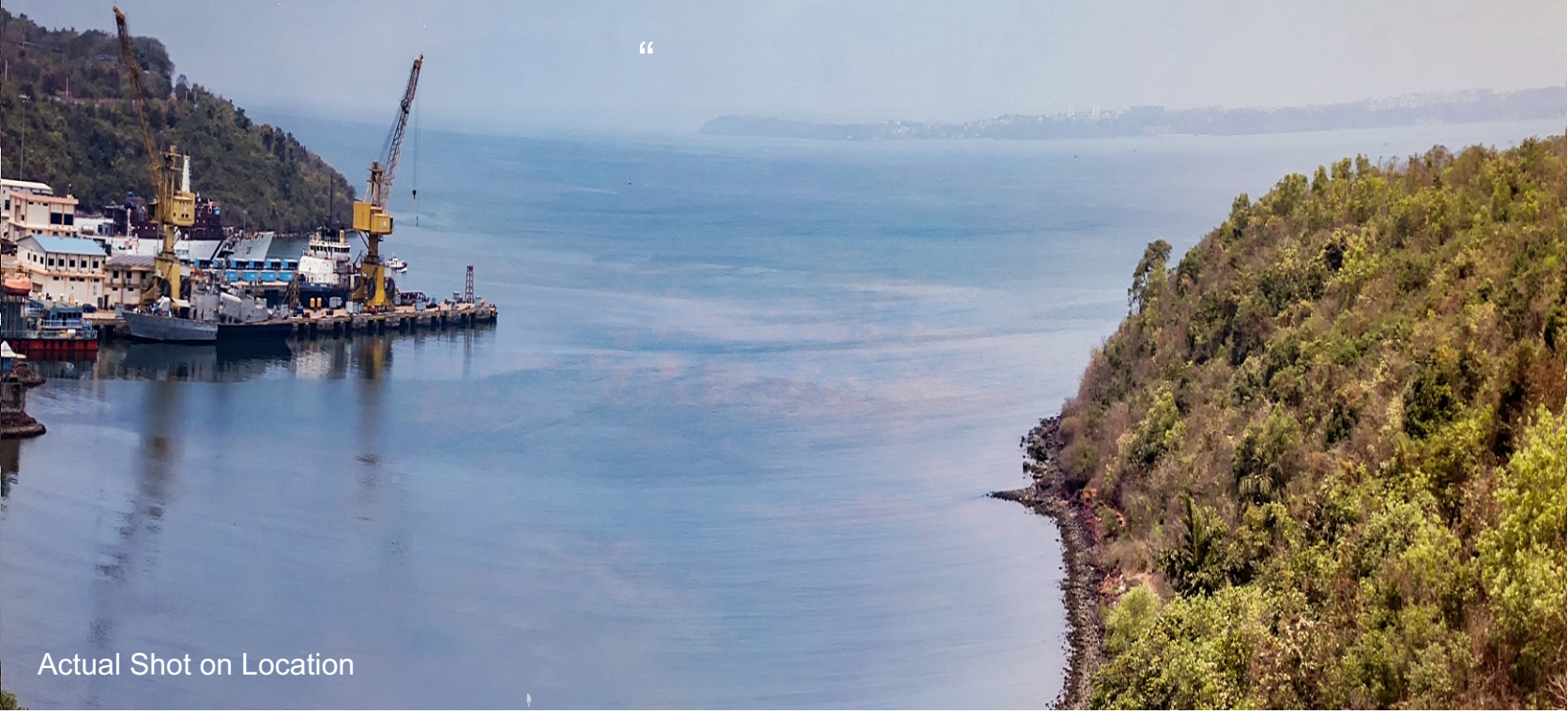
CHICALIM - GOA

RERA REG No. PRGO02190754

“

Chicalim, one of the most sought-after locations of Goa, housing Top industrialists and Professionals surrounded with Beautiful Villas and Scenic views of the Ocean and Semi-Urban Lifestyle! We introduce Essen Windmills for the lucky few with a project that compliments Chicalim.

“



Actual Shot on Location

ESSEN WINDMILLS: Where your happiness begins



“Homes located in Chicalim with a view of the **ocean** and alongside nature with all its majestic splendour. We are excited to unveil our **signature project** named **ESSEN WINDMILLS** which is a testimony to its breeze of the ocean, open spaces and abundant sunlight which will keep you **vibrant and charged** in your journey called **life.**”



DAY VIEW













4 BHK

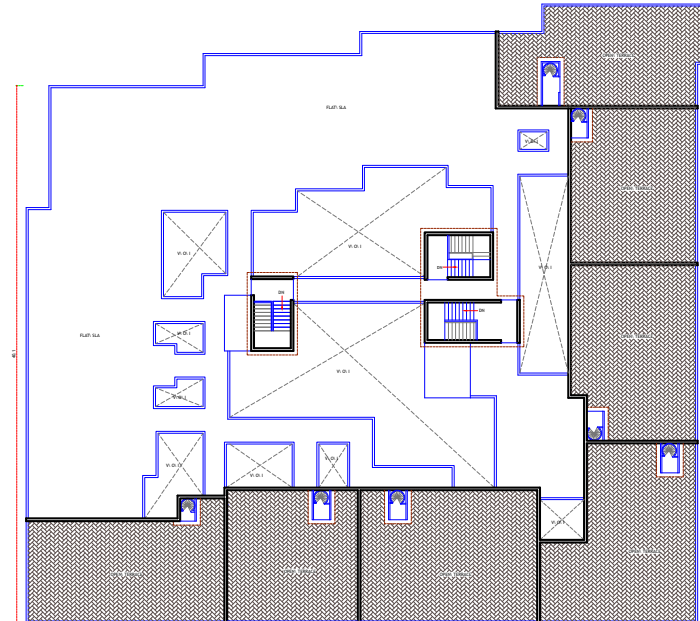


TYPE 1

3BHK KEY PLAN



2BHK, 3BHK & 4BHK PENTHOUSES ON THE 7TH FLOOR



ROOF FLOOR
SCALE: 1:11

3 BHK



TYPE 1



TYPE 2



TYPE 3



TYPE 4



TYPE 5



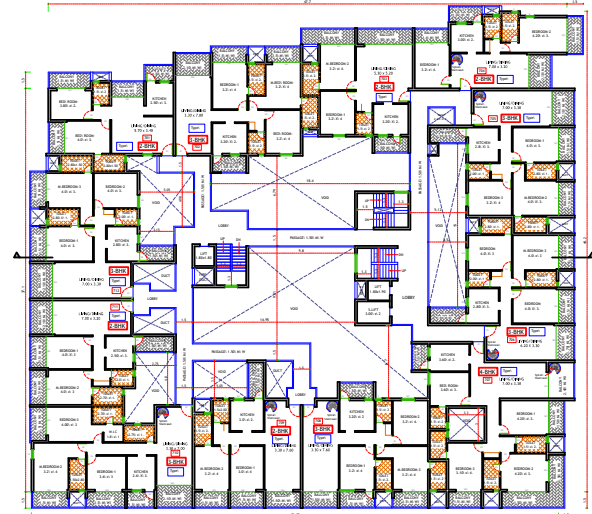
TYPE 6

2BHK KEY PLAN



ESSEN GROUP
SINCE 1974

7TH FLOOR PLAN



7TH FLOOR-PL
SCALE = 1:11



ESSEN WINDMILLS
Haven By The Shore
CHICALIM - GOA

2 BHK



TYPE 1



TYPE 2



TYPE 3



TYPE 4



TYPE 5



BASEMENT



SWIMMING POOL

FEATURES

- Clubhouse with well-equipped gymnasium
- Swimming pool with a sea view
- MS railing
- CCTV installed at strategic locations
- Aesthetically designed building elevation
- Passenger elevator and passenger goods lift
- Ample provision for four-wheeler parking
- Well compartmentalized basement parking with direction signage for hassle-free parking
- Granite or vitrified tiles flooring for staircases, risers and landings
- Modular kitchen without electrical appliances
- Energy-saving LED lighting in all common areas
- Sewage treatment plant
- Grey waterline plumbing for flushing system
- Designated dining area for all flats
- Video door-phone for all flats/ intercom facility provision for all flats
- Fire safety system
- Well-designed common areas
- Concierge
- Viewing Deck
- Waterfall feature
- Huge open spaces with landscaping
- Children's play area
- Fruit Garden and Fauna/Pet Zone



ARIAL VIEW



- External walls of laterite stone/ AAC blocks and internal walls of AAC block/Fly-ash bricks
- Waterproofing treatment for roof slab and toilet slab
- Vitrified tiles of size 800mm x 800mm
- Non-skid tiles for bathroom floor and all balconies
- Glazed ceramic tiles in washroom dado
- Kitchen dado tiles of glazed ceramic upto height of 60cm from top of platform
- Reputed plumbing fittings & pipes of reputed brands & set for plumbing works
- Modular electrical switches and copper wires of reputed brands
- UPVC/Powder-coated windows, Sliding doors & Ventilators.
- Laminated WPC doors for main & internal doors
- External walls and ceiling to be painted with superior quality emulsion paint
- Allocation of telephone point in the living room.
- Provision for cable in living room and master bedrooms

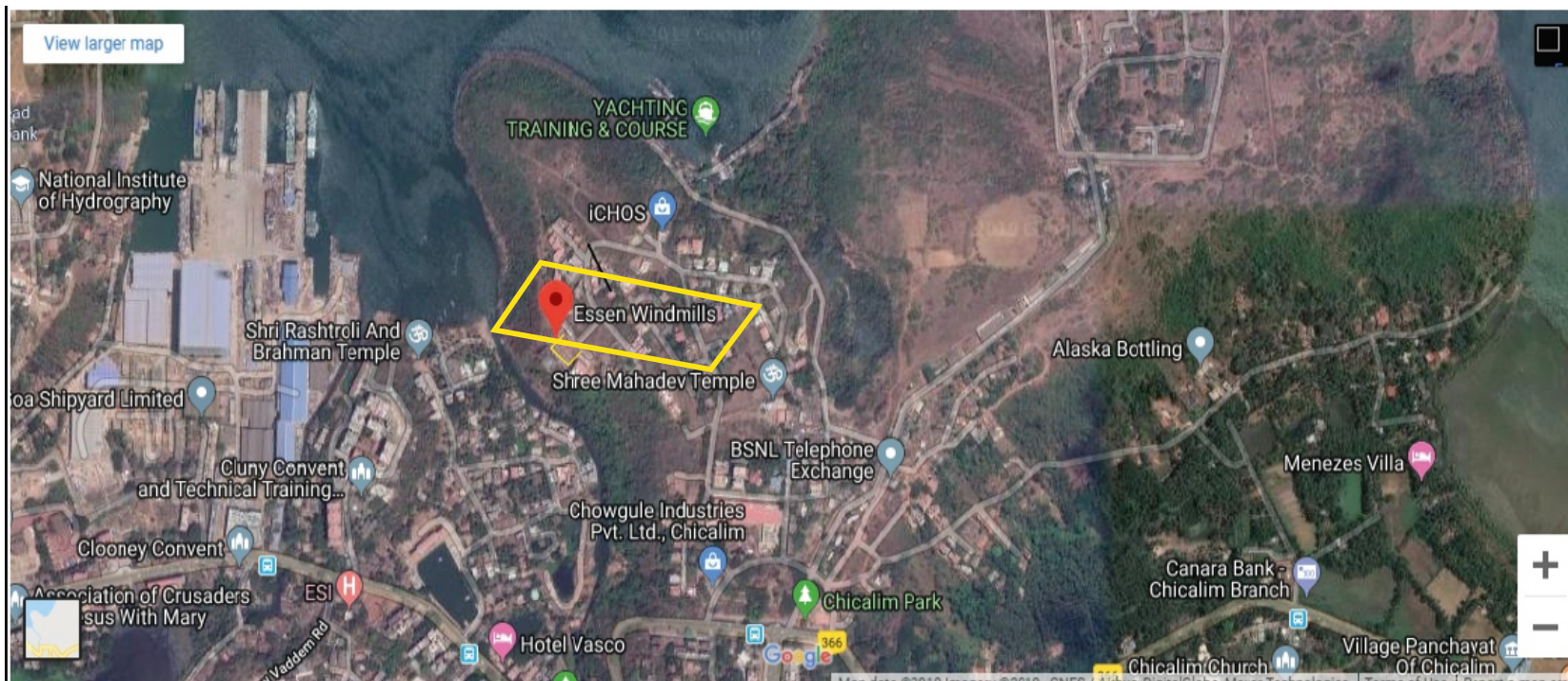
ESSEN WINDMILLS

ESSEN PEDIGREE



Essen Group has carved a name for itself in the real estate sector because we believe in creating not just structures but imposing landmarks. We have a flair for creating magnificent architectures which comprise of infrastructure projects and tailor-made residential complexes where families have been living happily for decades.

SITE LOCATION



2.5 kms away



0.6 kms away



3.5 kms away



2.5 kms away



ESSEN GROUP

SINCE 1974



ESSEN WINDMILLS

Haven By The Shore

CHICALIM - GOA

MEMBER OF
CREDAI



EsSEN Quality Assurance

www.essengroupgoa.com

Social Presence



TO KNOW MORE



+91 0832-2510029

+91 89568-44590

+91 98233-39630



sales@essengroup.info



OFFICE ADDRESS

ESSEN EMPIRE, 4TH & 5TH FLOOR,
OPP. KTC BUS STAND,
MUNDVEL, VASCO - GOA INDIA



SITE ADDRESS

ESSEN WINDMILLS
BEHIND COTTAGE HOSPITAL,
CHICALIM - GOA INDIA